

Magnetventile/Solenoid valves

Scem/Parker



Abb. Pict.	Bestell-Nr. Order-No.	Beschreibung Description
1	370057	kpl., 3 Wege, 230VAC cpl., 3 ways, 230VAC
1	370050	kpl., 3 Wege, 24VAC cpl., 3 ways, 24VAC
2	370062	Ventilkörper Solenoid square pin
3	371029	Magnetspule, 230VAC Magnetic coil, 230VAC
3	371036	Magnetspule, 24VAC Magnetic coil, 24VAC

Scem/Parker



Abb. Pict.	Bestell-Nr. Order-No.	Beschreibung Description
1	370059	kpl., 1/4", 3 Wege, 230VAC cpl., 1/4", 3 ways, 230VAC
1	370219	kpl., 1/4", 3 Wege, 24VAC cpl., 1/4", 3 ways, 24VAC
2	370206	kpl., 1/8", 2 Wege, 230VAC cpl., 1/8", 2 ways, 230VAC
2	370066	kpl., 1/8", 2 Wege, 24VAC cpl., 1/8", 2 ways, 24VAC
3	371029	Magnetspule, 230VAC Magnetic coil, 230VAC
3	371036	Magnetspule, 24VAC Magnetic coil, 24VAC

Magnetventile/Solenoid valves

Lucifer



Abb. Pict.	Bestell-Nr. Order-No.	Beschreibung Description
1	370053	kpl., 3 Wege, 230VAC cpl., 3 ways, 230VAC
1	370054	kpl., 3, Wege, 24VAC cpl., 3 ways, 24VAC
1	370051	kpl., 3 Wege, 24VDC cpl., 3 ways, 24VDC
2	370061	Ventilkörper Solenoid square pin
3	371031	Magnetspule, 230VAC Magnetic coil, 230VAC
3	371032	Magnetspule, 24VAC Magnetic coil, 24VAC
3	371043	Magnetspule, 24VDC Magnetic coil, 24VDC

Magnetventile Zubehör/Solenoid valve accessories

Scem/Parker, Lucifer



Abb. Pict.	Bestell-Nr. Order-No.	Beschreibung Description
1	371090	Stecker/groß Plug/ big
2	371095	O-Ring (Viton) O-Ring (viton)
3	371100	O-Ring (Silikon) O-Ring (silicon)

Sirai



Abb. Pict.	Bestell-Nr. Order-No.	Beschreibung Description
1	370168	kpl., 1/8", 2 Wege, 230VAC cpl., 1/8", 2 ways, 230VAC
1	370064	kpl., 1/8", 2 Wege, 24VAC cpl., 1/8", 2 ways, 24VAC
2	371071	Magnetspule, 230VAC Magnetic coil, 230VAC
2	371070	Magnetspule, 24VAC Magnetic coil, 24VAC
3	371091	Stecker/klein Plug/small

Pressostate/Pressure switches



Abb. Pict.	Bestell-Nr. Order-No.	Beschreibung Description
1	541021	Pressostat Pressure switch
2	520139	Membrane Membrane
3	541020	Pressostat, 1-polig Pressure switch, 1 pole

Schütze, Relais, Thermostate/ Contactors, relays, thermostats

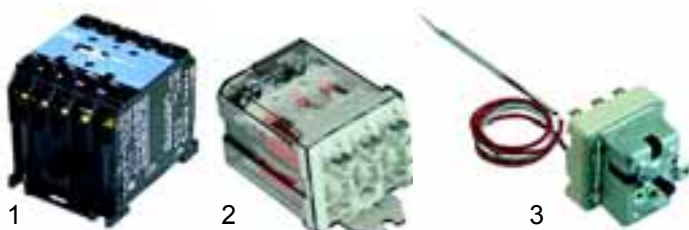


Abb. Pict.	Bestell-Nr. Order-No.	Beschreibung Description
1	380213	Schutz, 230V Contactor, 230V
1	380401	Schutz, 12VDC Contactor, 12VDC
1	380405	Schutz, 12VAC Contactor, 12VAC
2	380403	Relais, 230V Relay, 230V
2	380404	Relais, 24VAC Relay, 24VAC
2	380400	Relais, 12VDC Relay, 12VDC
3	390324	Sicherheitsthermostat Safety thermostat

Schalter/Switches



Abb. Pict.	Bestell-Nr. Order-No.	Beschreibung Description
1	346030	Magnetschalter Magnetic switch
2	346024	Schwimmer Float
3	346025	Magnet Magnet
4	345269	Microschalter Micro switch

Schalter/Switches

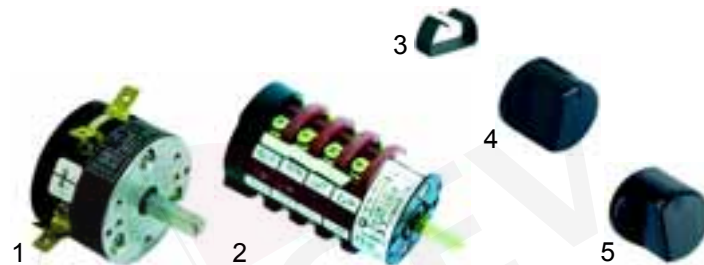


Abb. Pict.	Bestell-Nr. Order-No.	Beschreibung Description
1	345150	Schaltergruppe Switch group
2	345149	Umschalter, M20 - M30 Changer switch, M20 - M30
3	112006	Knebfeder Knob spring
4	112005	Knebel Knob
5	112004	Knebel Knob



Abb. Pict.	Bestell-Nr. Order-No.	Beschreibung Description
1	345090	Taster, 2-polig Push button, 2 poles
1	345033	Schalter, 2-polig Switch, 2 poles
2	301015	Taster, 2-polig Push button, 2 poles
3	359142	Lampe/grün, 230V Lamp/green, 230V
4	359143	Lampe/gelb, 230V Lamp/yellow, 230V

Niveauregler/Level controllers



Abb. Pict.	Best.-Nr. Ord.-No.	Beschreibung Description
1	400238	Niveauregler, RL30/3ES/F + Buzzer 9.1.19-61, 230V Level controller, RL30/3ES/F + Buzzer 9.1.19-61, 230V
2	400020	Niveausonde, 150mm Level probe, 150mm

Tastaturen/Key push buttons

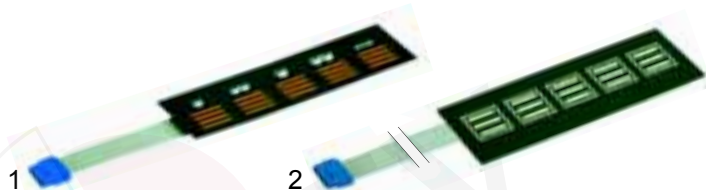


Abb. Pict.	Bestell-Nr. Order-No.	Beschreibung Description
1	400335	Tastatur, M20 Key push button, M20
2	400336	Tastatur, M30 Key push button, M30

Flowmeter/Flowmeter



Abb. Pict.	Bestell-Nr. Order-No.	Beschreibung Description
1	400209	Flowmeter, 1/4" (Digimesa) Flowmeter, 1/4" (Digimesa)
2	400004	Flowmeter, 1/4" (Gicar) Flowmeter, 1/4" (Gicar)
3	400256	Stecker Plug
4	400257	Zählrad (Gicar) Flow-meter reel (Gicar)
5	400258	Gehäusedichtung Case gasket

Heizkörper/Heaters



Abb. Pict.	Bestell-Nr. Order-No.	Beschreibung Description
1	417014	Heizkörper, 1 Gruppe, 1300W, 230V, 1-kreisig (Junior) Heaters, 1 group, 1300W, 230V, 1 circuit (Junior)
2	417011	Heizkörper, 1 Gruppe, 1800W, 230V, 3-kreisig, M20/30 Heaters, 1 group, 1800W, 230V, 3 circuits, M20/30
3	417013	Heizkörper, 2 Gruppen, 2850W, 230V, 3-kreisig (Alina) Heaters, 2 groups, 2850W, 230V, 3 circuits (Alina)

Heizkörper/Heaters



Abb. Pict.	Best.-Nr. Ord.-No.	Beschreibung Description
1	417012	Heizkörper, 2 Gruppen, 3750W, 230V, 3-kreisig, M20/30 Heaters, 2 groups, 3750W, 230V, 3 circuits, M20/30
2	417099	Heizkörper, 3 Gruppen, 5790W, 230V, 3-kreisig (Alina) Heaters, 3 groups, 5790W, 230V, 3 circuits (Alina)
3	529484	Dichtung (Klingarit) Gasket (klingerit)
4	528004	Dichtung (Teflon) Gasket (teflon)



Abb. Pict.	Bestell-Nr. Order-No.	Beschreibung Description
1	417015	Heizkörper, 1 Gruppe, 2700W, 230V Heaters, 1 group, 2700W, 230V
2	417016	Heizkörper, 2 Gruppen, 4000W, 230V Heaters, 2 groups, 4000W, 230V
3	417098	Heizkörper, 3 Gruppen, 5000W, 230V Heaters, 3 groups, 5000W, 230V
4	529496	Dichtung, M15 Gasket, M15

Kesseldichtungen/Pot gaskets



Abb. Pict.	Bestell-Nr. Order-No.	Beschreibung Description
1	528121	Kesseldichtung, 180 x 140 x 3mm, M20 - M30 Pot gasket, 180 x 140 x 3mm, M20 - M30
2	528122	Kesseldichtung (Teflon), 180 x 140 x 3mm, M20 - M30 Pot gasket (teflon), 180 x 140 x 3mm, M20 - M30
3	528120	Kesseldichtung, 215 x 192 x 3mm, M15 Pot gasket, 215 x 192 x 3mm, M15

Manometer/Manometer



Abb. Pict.	Bestell-Nr. Order-No.	Beschreibung Description
1	541210	Manometer, Doppelskala, M15 Manometer, double scale, M15
2	541211	Manometer, Doppelskala, M20 Manometer, double scale, M

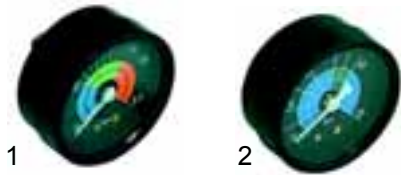


Abb. Pict.	Bestell-Nr. Order-No.	Beschreibung Description
1	541212	Manometer, 0 - 2,5bar, M25 - M30 Manometer, 0 - 2,5bar, M25 - M30
2	541213	Manometer, 0 - 15bar, M25 - M30 Manometer, 0 - 15bar, M25 - M30

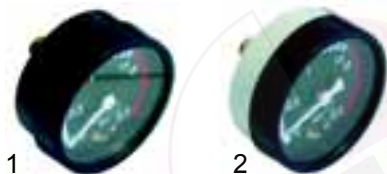


Abb. Pict.	Bestell-Nr. Order-No.	Beschreibung Description
1	541275	Manometer, 0 - 2,5bar Manometer, 0 - 2,5bar
2	541276	Manometer, 0 - 3bar, Doppelkegelring Manometer, 0 - 3bar, double cone ring

Ventile/Valves



Abb. Pict.	Bestell-Nr. Order-No.	Beschreibung Description
1	529312	Sicherheitsventil, 1,8bar, 3/8" Safety valve, 1,8bar, 3/8"
2	529316	Sicherheitsventil/plombiert, 1,8bar, 3/8" Safety valve/sealt, 1,8bar, 3/8"
3	529307	Sicherheitsventil/plombiert, 1,8bar, 1/4" Safety valve/sealt, 1,8bar, 1/4"
4	529361	Cu-Dichtung, 1/4" Cu-gasket, 1/4"
5	529349	Cu-Dichtung, 3/8" Cu-gasket, 3/8"

Ventile/Valves



Abb. Pict.	Bestell-Nr. Order-No.	Beschreibung Description
1	529303	Entlüftungsventil (CNS), 1/4" Empty valve (stainless steel), 1/4"
2	529304	Entlüftungsventil, 1/4" Empty valve, 1/4"
3	529361	Cu-Dichtung, 1/4" Cu-gasket, 1/4"

Wasserstandsglas/Level glass

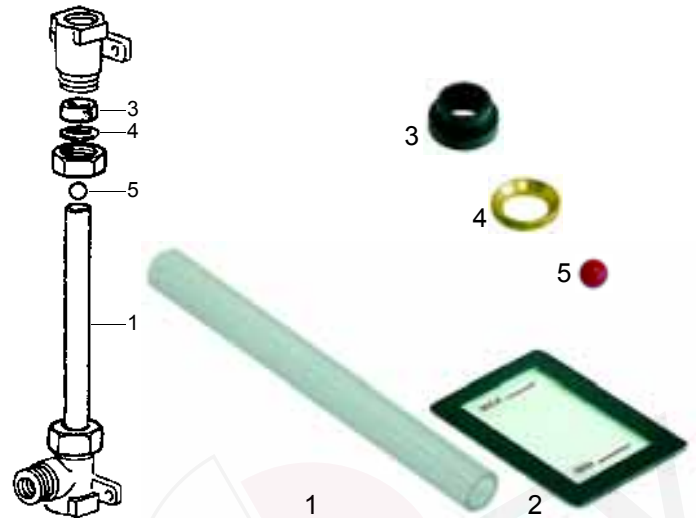


Abb. Pict.	Bestell-Nr. Order-No.	Beschreibung Description
1	529379	Wasserstandsglas, 135 x 12mm, M15 Level glass, 135 x 12mm, M15
1	529380	Wasserstandsglas, 117 x 12mm, M20 - M30 Level glass, 117 x 12mm, M20 - M30
2	529384	Skala, M15 Scale, M15
2	529385	Skala, M20 - M30 Scale, M20 - M30
3	529382	Wasserstandsglasdichtung Level glass gasket
4	529383	Pressscheibe Press washer
5	529355	Plastikkugel Plastic ball



Abb. Pict.	Bestell-Nr. Order-No.	Beschreibung Description
1	529381	Wasserstandsglas, 109 x 12mm (Alina) Level glass, 109 x 12mm (Alina)
2	529382	Wasserstandsglasdichtung Level glass gasket

Ersatzteile passend für/Spares parts suitable for Cimballi

1
Passend für/Suitable for Cimballi

Wasserfüllventil/Water intake valve

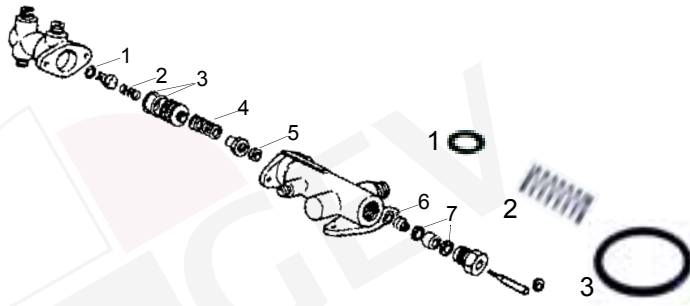


Abb. Pict.	Bestell-Nr. Order-No.	Beschreibung Description
1	529368	O-Ring O-ring
2	529497	Feder Spring
3	529498	O-Ring O-ring



4	529499	Feder Spring
5	529539	Dichtung, 15 x 8 x 4mm Gasket, 15 x 8 x 4mm
6	529544	O-Ring O-ring
7	528957	Dichtung (Teflon), 11 x 8 x 3mm Gasket (teflon), 11 x 8 x 3mm

Hähne/Taps



Abb. Pict.	Bestell-Nr. Order-No.	Beschreibung Description
1	529503	Hahn komplett, Dampf/Wasser Tap complete, steam/Water
2	111062	Knebefeder Knob spring
3	111060	Knebel, M15 Knob, M15
4	111061	Knebel, M20 Knob, M20



5	529546	Dichtung, 11 x 3 x 3mm Gasket, 11 x 3 x 3mm
6	528200	O-Ring O-ring

Rohre/Pipes

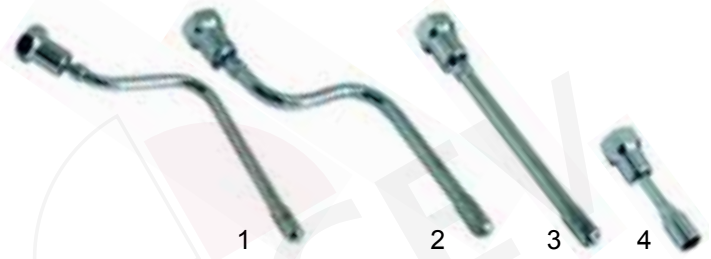


Abb. Pict.	Bestell-Nr. Order-No.	Beschreibung Description
1	529571	Dampfrohr, M15 Steampipe, M15
1	529574	Dampfrohr (CNS), M15 Steampipe (stainless steel), M15
2	529572	Dampfrohr, M20 Steampipe, M20
2	529575	Dampfrohr, M20 (CNS) Steampipe, M20 (stainless steel)
3	529576	Dampfrohr, M25 - 30 Steampipe, M25 - 30
3	529577	Dampfrohr, M25 - 30 (CNS) Steampipe, M25 - 30 (stainless steel)
4	529578	Wasserrohr Waterpipe



Abb. Pict.	Bestell-Nr. Order-No.	Beschreibung Description
1	528205	Dichtung, 20 x 17 x 2mm Gasket, 20 x 17 x 2mm
2	529708	Feder Spring
3	529547	Pressscheibe Press washer
4	529545	O-Ring O-ring
5	529548	Dichtung (Teflon) Gasket (teflon)
6	529707	Überwurfmutter Union nut
7	529627	Hitzeschutz Antiscorching

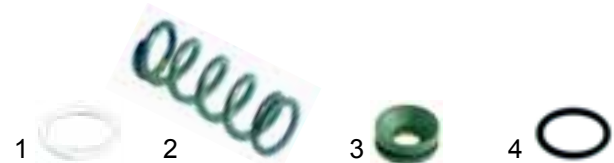


Abb. Pict.	Bestell-Nr. Order-No.	Beschreibung Description
1	528205	Dichtung, 20 x 17 x 2mm Gasket, 20 x 17 x 2mm
2	529708	Feder Spring
3	528204	Buchse Bush
4	529545	O-Ring O-ring

Gruppe M15/Group M15

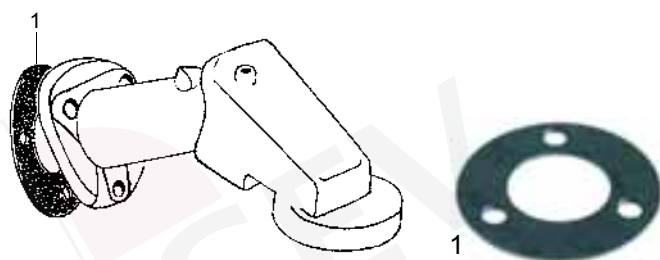
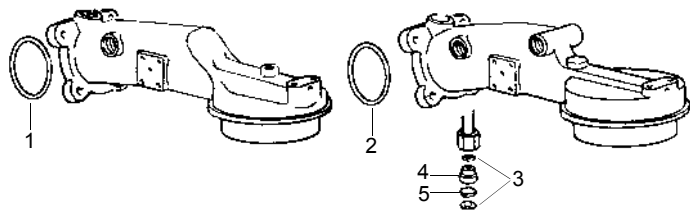


Abb. Pict.	Bestell-Nr. Order-No.	Beschreibung Description
1	528430	Gruppendichtung, 94 x 2mm Group gasket, 94 x 2mm
1	528431	Gruppendichtung, 94 x 3mm Group gasket, 94 x 3mm

Gruppe M20 - M30/Group M20 - M30



M20 - M25

M27 - M30



Abb. Pict.	Bestell-Nr. Order-No.	Beschreibung Description
1	528004	Dichtung (Teflon) Gasket (teflon)
2	529484	Dichtung (Klingerit) Gasket (klingerit)
3	528433	Cu-Dichtung Cu-gasket
4	528434	Düse Nozzle
5	528435	Filter Filter

Dusche/Shower



Abb. Pict.	Bestell-Nr. Order-No.	Beschreibung Description
1	528436	Wasserverteiler Water dispersion
2	529084	Dusche, Ø51,5mm Shower, Ø51,5mm
3	529089	Dusche, M30 Shower, M30

Blindfilter/Blindfilter



Abb. Pict.	Bestell-Nr. Order-No.	Beschreibung Description
1	529024	Reinigungsmembran Cleaning membran
2	529023	Blindfilter Blindfilter

Siebträgerdichtungen/Filter holder gaskets



Abb. Pict.	Bestell-Nr. Order-No.	Beschreibung Description
1	528033	Distanzeinlage, 71 x 68mm Shirn gasket, 71 x 68mm
2	528036	Siebträgerdichtung/konisch Filter holder/conical
3	528035	Siebträgerdichtung, 70 x 56 x 8mm Filter holder/conical, 70 x 56 x 8mm

Filter/Filters



Abb. Pict.	Bestell-Nr. Order-No.	Beschreibung Description
1	529017	Filter/1 Tasse (7g) Filter/1 cup (7g)
1	529018	Filter/1 Tasse (6g) Filter/1 cup (6g)
2	529019	Filter/2 Tassen (14g) Filter/2 cups (14g)
2	529020	Filter/2 Tassen (12g) Filter/2 cups (12g)
3	529079	Siebträgerfeder Filter holder spring

Filter/Filters



Abb. Pict.	Bestell-Nr. Order-No.	Beschreibung Description
1	529051	Siebträger, 2 Löcher, M10 Filter holder, 2 holes, M10
2	529052	Siebträger, 3/8", M10 Filter holder, 3/8", M10
3	529053	Griff, M10 Knob, M10

Ausläufe/Spouts



Abb. Pict.	Bestell-Nr. Order-No.	Beschreibung Description
1	529009	Auslauf, 2 Löcher, 1 Weg Spout, 2 holes, 1 ways
2	529010	Auslauf, 2 Löcher, 2 Wege Spout, 2 holes, 2 ways
3	529001	Auslauf 3/8", 1 Weg lang Spout 3/8", 1 way long
4	529003	Auslauf 3/8", 1 Weg gebogen Spout 3/8", 1 way curved
5	529007	Auslauf 3/8", 2 Weg kurz Spout 3/8", 2 way short